



**ACME TOWNSHIP PARKS & TRAILS MEETING**  
**ACME TOWNSHIP HALL**  
**6042 Acme Road, Williamsburg MI 49690**  
**June 16<sup>th</sup>, 2017 8:30 a.m.**

**ROLL CALL:**

**Committee:**

	Feringa		Heflin		Heffner		Jenema
	Smith		Timmins		Wentzloff		
	Heinert		Kushman				
	Winter		Lamont				

**Advisory:**

**Staff:**

**A. PUBLIC COMMENT:**

**B. APPROVAL OF AGENDA:**

**C. INQUIRY AS TO CONFLICTS OF INTEREST:**

**D. CORRESPONDENCE:**

**E. ACTION:**

1. Approve Parks & Trails Minutes 02/17/2017
2. Approve Parks & Trails Minutes 05/19/2017

**F. OLD BUSINESS:**

1. Bayside Park Design
  - a. Parking Lot Layout
  - b. Bench, Litter Receptacle, and Bike Design Palettes
  - c. Adopt-A-Bench Program
2. TART Trail
  - a. Bunker Hill to 5 Mile DTE Project, RR Crossing
  - b. Four Mile to Three Mile Sewer Bypass
3. Deepwater Point Trail
4. Acme Connector Trail

**G. NEW BUSINESS:**

1. Park Facility Update – Gary Lamont
2. Bayside Park Pavilion Discussion
3. Capital Campaigns – Naming of Park Amenities

**H. PUBLIC COMMENT**

**ADJOURN:**

**ACME TOWNSHIP PARKS & TRAILS MEETING**  
**ACME TOWNSHIP HALL**  
**6042 Acme Road, Williamsburg MI 49690**  
**June 16<sup>th</sup>, 2017 8:30 a.m.**

**ROLL CALL:**

<b>Committee:</b>	x	Feringa	x	Heflin	excused	Heffner	X late	Jenema
	x	Smith	x	Timmins	x	Wentzloff		
<b>Advisory:</b>	x	Heinert	x	Kushman				
<b>Staff:</b>	x	Winter	excused	Lamont				

Feringa starts the meeting as Jenema is delayed.

**A. PUBLIC COMMENT: none**

**B. APPROVAL OF AGENDA:** Winter added MParks correspondence about appropriations for the park from the trust fund.

Motion: Wentzloff approves the agenda with the addition of the MParks correspondence

2nd. By Timmins. Motion carries

**C. INQUIRY AS TO CONFLICTS OF INTEREST: none**

**D. CORRESPONDENCE:** MParks letter

**E. ACTION:**

**1. Approve Parks & Trails Minutes 02/17/2017** - Timmins gave input, that relistening to the tape from 2/17 wouldn't help clarify the points that Heffner wanted clarified, it was still a very convoluted conversation.

Discussed not wanting to set an unrealistic precedent for future minutes that can't be upheld.

Removed the comments made by Winter about the Nelson family.

Motion: Wentzloff to approve minutes from 2/17/2017 with the removal of the Nelson family.

2nd. Jenema Motion carries.

Jenema takes over the meeting

**2. Approve Parks & Trails Minutes 05/19/2017-** Timmins pointed out she couldn't add Linda Weeks name as she didn't hear it on the tape from the meeting, keeping to protocol nothing that wasn't stated at the meeting can be added to the minutes.

Motion Heflin 2nd. Timmins

Motion carries, Feringa abstains, wasn't at the 5/19/17 meeting.

**F. OLD BUSINESS:** Jenema discussed meeting with Winter and Heinert to organize the changes that may happen.

**1. Bayside Park Design**

**a. Parking Lot Layout** Klaus-

**b. Bench, Litter Receptacle, and Bike Design Palettes** Klaus- discussed bike racks, benches, and recycling/trash receptacles.

Committee discussed the different styles of benches

Wentzloff- thinks colors go out of style too often, would rather see a neutral more timeless color. Wentzloff hates the green

Klaus- shared his view of why he picked colors instead of something more neutral.

Discussion followed.

A sample bench is being temporarily provided by Landscape forms (out of Kalamazoo)

to allow everyone to see what the green bench would look like. They are not charging the township anything for the bench or shipping, but we do have to unload it from the truck. Committee discussed the best place for people to view the bench, either township hall or park.

- c. *Adopt-A-Bench Program* - Discussed the placement of the memorial plaques on the benches. It will be on the arm due to the design on the back of the bench also to allow families to split the cost of a bench since there will be 2 armrests. The armrests on all the benches are to meet ADA compliance.

Heflin- asked about the paint on the benches, will it be available in the future for repainting.

Klaus discussed how the company is using standardized colors, it will be available continuously.

Klaus discussed styles and placement of bike racks. Points of parking in key areas. Clusters of 6-8 hoops, double sided.

Klaus suggested an anodized bronze for light poles, drinking fountain, bike racks, and other fixtures that are used heavily do to wear and tear. He has also used stainless steel, galvanized steel, aluminum (the only thing that doesn't rust).

Klaus suggested putting the sample bench up by the potty for people to see how it will look in the surroundings the bench would be placed in the future.

Jenema asked for opinions on the bike racks. Discussion follow, including cost and budget of the project.

Klaus stated the average cost of bike racks runs between \$300-400. He said there are many other places to look for bike racks. Wanted to give the committee a starting point.

Winter commented that he would like Klaus to find bike racks that don't count on the tire as a way to chain the bike and keep them up right. Discussion followed.

Smith - asked about durability of the bike racks.

Klaus- said they would have to be run over by a truck, durability comes into play more when they are painted, causing constant maintenance. That is why he recommended the anodized bronze.

Timmins asked about making recycling bins green and the garbage bins a different color to give people a visual cue.

Discussed the grass pattern on the garbage receptacles concern of garbage getting stuck in the pattern, and light colors showing all the splashes and dirt.

Discussion followed on the placement of; beach shower, foot wash, drinking fountain/bottle fill stations, the foot wash has to be to be along the walkway.

Wentzloff requested warm, non-LED lights for the walkway lighting. Committee agreed.

Wentzloff asked about fading of the benches in the direct sun light.

Klaus said the painted benches would warm up and the wood would fade if not protected.

Klaus discussed the parking lot and changes that were ok'd by MDOT, and TART trail going through the park and across the parking lot, stormwater solutions, dumpster enclosure and placement, shifting the design a bit to save a large white pine, placement of lighting and the use of minimal lighting within the park, lights are programmable to shut off and turn on.

Klaus discussed taking out the 2 shade structures and replacing with a pavilion in the first phase, he suggested it would be easier to do a pavillion in this phase and that we should consider approaching the DNR with a change of scope if the township can leverage the money.

Feringa asked about if the wells were monitoring wells

Klaus said they were monitoring wells, but from across the street not the Shell gas station. They are not in use. Klaus is in the process of deciding which wells will be used and which will be taken out.

Wentzloff asked about the lighting in the middle, wanted a lower lighting source to keep things out of the line of sight across the park.

Klaus said he would look at that. Committee supported that.

2. **TART Trail.**

a. *Bunker Hill to 5 Mile DTE Project, RR Crossing* - Kushman- contacted by DTE that they have to tear up the area between Bunker Hill and 5 Mile. Not sure what they have to do, has a meeting with them later in the day to discuss it. Kushman wants to use this as an opportunity to bring the trail up to today's standards (10ft. Trail, it is 8ft now) and the railroad track crossing, to get rid of it for safety. Discussion on plan he hands out. MDOT will also be at the meeting. TART is looking at how to accommodate any cost that DTE won't be covering.

Jenema discussed what the township may be able to do based on what the priority is with trail development.

TART is not looking for any funding commitments at this time. Discussion will continue when TART and the township know more about DTE's intent.

b. *Four Mile to Three Mile Sewer Bypass*, Kushman discussed the trail, about 2/3rds of it, are being removed to replace a sewer main. TART is again looking at getting the 10ft standard implemented at that site also.

Winter talked about the construction schedule, starting this fall and finishing in the spring. They will make the trail useable during the winter for those who use it.

3. **Deepwater Point Trail** - Wentzloff updated -She, Julie Clark and Kelly (from the resort) met with Sue Greasons (association manager from the condo's) , Sue took the proposal to the board, the association committee doesn't support a trail, as they think they will be liable for the trail. Feringa clarified that it is a public road, and there are discussions happening between the shores and the resort. Feringa is having RCA collecting the documents proving it is a public road. Discussion followed

4. **Acme Connector Trail** - Winter gave an update. Nate Elkins contacted him to discuss the trail through Dan Kelley's property. Winter will also be reaching out to Lannie Johnson's realtor, to discuss Lannie's interest in the Acme connector trail. Winter is waiting on Jeff Jocks to go over the letters of Commitment from Peace of victory and Samaritas

G. **NEW BUSINESS:**

1. **Park Facility Update** – Gary Lamont Jenema believes Gary needs to come to the park maintenance meetings not the park and trails. She will be talking to him about that.

2. **Bayside Park Pavilion Discussion-** Winter discussed making the footprint of where the pavilion maybe in the future (if we don't get it in this phase)

3. **Capital Campaigns** – Naming of Park Amenities Anthony Rupert (development director from the GTRLC) contacted Shawn about how the township feels about allowing donors to name large elements that they donate to in the park, as a way to encourage donors to give to the park. Jenema asked if the township would get the full amount donated, if the amount donated exceeded the amount in the quote?

Winter said the individuals would be donating to the park, so it should all go to the park.

Heflin clarified how the donation and naming opportunity work within the GTRLC.

Discussed that early donors for the land didn't have the same naming options. Discussed ways to address this.

Discussed different options for naming.

Jenema will take the committee's recommendation to allow

Motion: Jenema, 2nd. Timmins- that the township allows the pavilion and playground to be named as part of the capital campaign fund, as long as the naming is done in a tasteful manor, as well as a plaque of recognition for previous donors.

Motion carries

**H. PUBLIC COMMENT** none

**ADJOURN:** Motion to adjourn Feringa 2nd. Jenema.  
Motion carries.

**ACME TOWNSHIP PARKS & TRAILS MEETING**  
**ACME TOWNSHIP HALL**  
**6042 Acme Road, Williamsburg MI 49690**  
**February 17<sup>th</sup>, 2017 8:30 am**

**Draft Minutes**

**ROLL CALL:**

<b>Committee:</b>	<b>X</b>	Feringa	<b>X</b>	Heflin	<b>X</b>	Heffner		
	<b>X</b>	Jenema	<b>X</b>	Timmins	<b>X</b>	Wentzloff		
<b>Advisory:</b>	<b>-</b>	Heinert	<b>X</b>	Kushman				
<b>Staff:</b>	<b>X</b>	Winter						

- A. PUBLIC COMMENT:** Jenema discussed Robert's rules of order and why old business items would be kept on the agenda but may not be discussed at every meeting.
- B. APPROVAL OF AGENDA:**  
**Motion:** To approve the agenda Wentzloff, 2nd. By Heflin. Motion carries
- C. INQUIRY AS TO CONFLICTS OF INTEREST:**
- D. CORRESPONDENCE:**
- E. ACTION:**
- 1. Approve Parks & Trails Minutes 01/20/2016**  
**Motion:** To approve the minutes from 01/20/16 Wentzloff, 2nd. By Timmins. Motion carries
- F. OLD BUSINESS:**
- 1. Deepwater Trail Segment Update** - The donation money came in and Pam (TART's development Director) are putting the remaining pieces together for the match money. The deepwater point project will roll into the north bayside park project. Feringa and Kushman have a meeting 2/ 24/17 to start looking at maps through the tribal properties.
  - 2. Bayside Park Design Elements** - Klaus will be at the March meeting to discuss. No action today. Heffner asked about the dirt in bayside parking lot being moved. Jenema explained they were trying to have the cost of moving the dirt to the place it will be used, involves minor tree removal, covered under the grant.
  - 3. Adopt-A-Bench Program** - on hold until March. Will discuss addition of adding swings later in the planning process after placement of objects is determined. Wentzloff brought up the question of allowing objects in parks, that received the trust fund grants to allow memorial plaques on donated objects.
  - 4. Acme Connector Trail – 2% Grant** - The township was awarded \$15,000 from the GTB for the connector trail from Bunkerhill to M72. The amount awarded was half of the cost needed. TART is hoping to fill that gap privately, but may have to come back to the township if there is a gap in their fundraising efforts. Kushman spoke about Holiday Inn's support of the connector trail project but due to a bundling of properties on the corporation's end it makes it difficult to easily grant an easement. Trail access is the number one requests of their guests. Jenema - asked Aukerman to attend the Park and Trail meeting today because of overlap on the park and trails committee and the board, and also because she helped the committee to set up the committees focus and goals.
  - 5. Gilroy Park/Bunker Hill Boat Launch-** -There was confusion at the board level about the committee's intent concerning Gilroy park. Jenema thought the committee had given Zollinger the go ahead to move forward with looking into Gilroy park. The board needs an actual motion of support from the committee.

Jenema went over her memory of how the discussions went with the back and forth involving the south bayside park and the boat launch, previously recommended to be closed by the committee.

Winter gave more input.

Wentzloff asked about leaving the boat launch as is, with parking at Gilroy park and no parking at the actual launch to leave room for the trail to go through.

Jenema said yes until the trail goes in.

Aukerman explained the history of townships interest in Gilroy park.

Heffner had a meeting with Brian Terhune and walked the property from Gilroy to south bayside. Heffner brought up the discussion that instead of purchasing Gilroy park that we keep the boat launch at bayside open and move the parking, bathrooms and kayak launch down near the marina. Heffner said a minimal amount of money would be needed to bring the launch at Bunkerhill rd. up to better safety standards, estimated cost to be around \$2500, in his opinion. He gave a list of things he saw that needed repair; chunks broken off areas of the ramp, rebar showing through on ramp, damage to the storm drain, gravel repair and signage to help show people where to park. Heflin gave her opinion on why the boat launch should be closed for safety issues and lack of township funds to fix it.

Winter added that even the Nelson family who owns the business properties across the street from the boat launch, are in agreement with closing the Bunkerhill launch.

Discussion followed

Jenema talked about the fact that it was up to the board to decide to leave the boat launch open, the park and trail committee made a motion to close it. Original motion maker would have to reopen the motion to amend it. Lapointe made the original motion, he is no longer on the committee.

Jenema asked either for a consensus from the park and trails committee or suggested that Heffner bring his ideas back to the board.

Aukerman asked Heffner what his main objectives are? With the TART trail placement being the number one objective of the committee at that location. He agreed getting the trail was a priority, but with the transfer station believed it would be too hard for bikes.

Discussion followed about trail placement and stormwater runoff from Bunkerhill rd, Mdot has been met with to discuss the redo of Bunkerhill rd.

Discussion continued moved to list of goals put together in 2015

Briefly looked at how much the committee and township have been able to move forward in the last 2 years all agreed we are making good progress.

**Motion:** By Timmins 2nd. By Heflin. To recommend to the board to pursue, with MDOT, looking into the maintenance cost of Gilroy park with the intent of possible acquiring the park.

Motion carries 5 for, 1 opposed

#### **G. NEW BUSINESS:**

1. **2017 Parks & Trails Priorities Update** The townships part-time park employee starts in April. The maintenance committee is recommending to the board that larger maintenance is contracted out. Budget planning for next year is starting at the township level. Discussed the repaving of Bunkerhill rd.. Feringa said the timeline is dependant on staffing. Discussed having to do a new park plan and coming up with new 5 year plan that will involve finishing the projects already started and others decided upon later by the committee.

#### **2. PUBLIC COMMENT Still looking for a new committee member**

**ADJOURN: Motion by Wentzloff 2nd. By Timmins. Passed**

**ACME TOWNSHIP PARKS & TRAILS MEETING  
ACME TOWNSHIP HALL  
6042 Acme Road, Williamsburg MI 49690  
May 19<sup>th</sup>, 2017 8:30 a.m.**

**ROLL CALL: 8:35**

<b>Committee:</b>	<b>Excused</b>	Feringa	X	Heflin	X	Heffner	X	Jenema
	X	Smith	X	Timmins	Excused	Wentzloff		
<b>Advisory:</b>	<b>X</b>	Heinert	X	Kushman				
<b>Staff:</b>	<b>X</b>	Winter						

**A. PUBLIC COMMENT:**

**B. APPROVAL OF AGENDA: Motion to Approve Timmins, 2nd. Heflin. Motion carries**

**C. INQUIRY AS TO CONFLICTS OF INTEREST:**

**D. CORRESPONDENCE:**

**E. ACTION:**

1. **Approve Parks & Trails Minutes 02/17/2017** - need to clarify that the Nelson family felt something needed to be done at the boat launch not removed. Will remove from previous minutes. Jim Heffner wanted his intentions from the February meeting Clarified. He submitted a letter (see attached) Discussed his meaning on seconding the motion for the closing of the boat launch. Jim had a temporary and long term idea. Move the February minutes to the June meeting.
2. **Approve Parks & Trails Minutes 04/21/2017-** Motion to approve. Heffner 2nd. Heflin. Motion carries

**F. OLD BUSINESS:**

**1. Bayside Park Design Elements**

Bench and Litter Receptacle Designs and Pricing (attached)

Adopt-A-Bench Program (Kalamazoo program brochure attached)

Klaus- presented 2 main ideas for benches and trash/recycling receptacles. LandScape forms is the name of the company the examples are from. The company is out of Kalamazoo.

Option 1) Metal bench with a simple grass pattern on the back with clean lines, this style can be powder coated with an anti-rust agent. Estimated life span of this bench before it needs to be re-powder coated is 15-20 years. Recommended to cover them in winter.

Option 2) Metal framed bench with slatted bottom and back made from either Epay wood or a recycled wood. They also have about a 20-30 year lifespan, before maintenance or replacement.

Discussion of the 2 different types followed. Cost is estimated at about \$2000

Winter commented that 5 or 6 people are already calling to sign up to adopt, he wants to make sure we are moving forward in a timely matter as they are calling monthly.

Heffner reminded the committee about the adopted a swing for

Klaus will firm up the numbers and get back to Shawn. Jenema asked to have them figures before the June Board meeting, Klaus agreed.



Jenema clarified that the township wants the adopt a bench program ready to roll out in the fall once all the correct grant agreements are signed.

Winter asked about the prices of the benches being looked at in relation to the pricing written into the grant. Klaus said they were a little higher. Discussion followed about mixing up bench styles. And how to best repurpose the old benches.

Consensus on the benches:

- 1) Recycled product or Epay wood, the committee was worried about the heat metal would throw off in the summer.
- 2) The committee liked the light sage/taupe color, for the metal frame of the wood bench, in the picture Klaus shared.
- 3) Committee wants both trash and recycling receptacles.

Klaus will match the design the committee picks for the bench with the other accessory items such as; bike racks, light fixtures, drinking fountains and other details.

Winter is still looking at how to set a price point for the adopt a bench program. Discussion followed with Kushman and how TART runs their memorial bench program. Committee discussion followed to set a price for the adopt a bench program and a guaranteed plaque replacement time. Committee agreed to set a guaranteed 10 year minimum on the memorial plaque replacement within Acme's park if something happens to the bench, otherwise the cost is for the life of the bench. With a \$1000 adoption fee. Kushman let the committee know that Traverse City is starting a legacy tree program.

Klaus discussed the phasing plan for Bayside park, all of which is contingent on signed contracts with the trust fund. Grading, concentrating on the main grading plan and utility plan for the whole park that will drive any underground work and parking lots they hope to begin this year right after labor day. Sequencing is still unknown as to what will begin first. Klaus's goal is to have everything ready so the township can bid the project in July. Not sure about park access once construction starts but Klaus is hoping to provide some space for those who enjoy the park in the fall. Once both parking lots are started the park may have to be shut down. Would like to have the main oval lawn area and trail around it finished this fall .

Rebuilding the opening to the drive way. Working with MDOT to get permits for parking lot and trail areas. Discussed what is happening with the entrance off 31, best option is still being investigated.

Inspecting wells, and how water service will be used on site. There are 4 wells currently on site.

South end of North bayside park will begin next spring.( playground, second beach wall etc.) Working with TART to identify bike parking and kiosk placement. Winter wants a kiosk that has panels to replace panels when needed and not the whole kiosk.

Bidding is being done soon for so of the smaller dirt work, the funds are coming from township funds not the grant.

Committee needs to decide what to do with a shed and arbor that will be in the way of the trail system in the park.

Heffner asked about distance between US 31 and the trail. Kushman said that TART looked over the plans and recommended that the trail was placed out of the right of way Discussion followed. Discussed how they will deal with the new exit out of the park, working with the road commission

and tribe to work out the details for where the exit will actually be. Klaus double checked with MDOT concerning the other curb cuts further down from the current parking lot, they are in agreement that, those curb cuts are open to use in the future.

Klaus hopes to have the bigger bid package put together in the next month to be bid in July.

2. Deepwater Trail Segment Update- Kushman discussed bike parking on both ends of the park to intercept the cyclist before they are in the park and making the bathroom area wider for bike parking. Kushman feels it can be done through the design of the trail and may be minimal signage Discussed the segment of the trails going through the resort property. TART is feeling the need to talk to the condo association. Looking for other ways to engage the condo homeowners association. Want to form a collaborative partnership so that misinformation isn't spread and more money than necessary spent. Still hoping that the trail to deep water point will be constructed at the same time as Bayside park but it may line up to a later phase to make sure all stakeholders have input. Discussed the misinformation on a pamphlet found by park maintenance staff at the bunker hill boat launch.
3. Acme Connector Trail Winter talked with Dan Kelley and his planner, that part of the trail is on hold until Kelley can be sure that he can get water to the area he wants to develop. Discussed the getting the letter of commitment from the church and Samaritas. Winter is working with Jeff Jocks to draft the letters. Jenema discussed the TC to Charlevoix trail resolution that was discussed at the May board meeting. The original resolution of support stands. Jenema discussed the laws around public right of way and how property owners are not taxed on them.

**G. NEW BUSINESS:**

**Note Gary Lamott, Acme's part-time parks maintenance employee has given his resignation to take effect June 15th.**

1. 2017 Park Monitoring/Inventory Assignments Jenema discussed the importance of the park inventory sheets so that we have eyes in the parks.

Bayside Park North- Jenema

Saylor Park- Timmins

TART - Heffner

Yuba- Heflin

South and Mid- Bayside park- Smith

Deepwater Pt.- Wentzloff

**H. PUBLIC COMMENT –**

1. **Pat Salathiel- 5 mile rd. Acme**

Very happy with everything happening in the parks. Asked about irrigation ( Jenema responded that it would be done in the fall, depending on funding). She also asked questions about a pavilion and the park area in front of the marina.

2. **Gordie Lapointe-**

Was disappointed to hear Lamott was leaving, discussed long term projects and the money it will cost. Recommended that the committee come up with a good budgeting system. Asked about the trail through Yuba park. Asked about Gilroy park.

**ADJOURN:**

**Motion to adjourn Timmins, 2nd. Heffner.**

**Motion carries**

## Shawn Winter

---

**From:** Kevin Krogulecki <kskrogulecki@goslingczubak.com>  
**Sent:** Monday, June 12, 2017 9:07 AM  
**To:** Jay Zollinger; Shawn Winter  
**Subject:** FW: North Bayside Park - Acme Twp. - US-31 Drive Opening Sketch  
**Attachments:** 2017390001orth Bayside ParkUS-31 Drive Opening 06-08-17.pdf

Hi Jay and Shawn,

FYI the attached drawing shows our latest proposed US-31 driveway entrance to North Bayside Park. Jeremy from MDOT has reviewed the layout and they are OK with the proposed design.

We will incorporate this into our plan as shown, which will also be part of our official MDOT permit application down the line.

Thank you much, please let me know if there are any questions.

--

Kevin S. Krogulecki | Landscape Architect  
**Gosling Czubak Engineering Sciences, Inc.**

231.946.9191 office | 231.933.5105 direct  
[kskrogulecki@goslingczubak.com](mailto:kskrogulecki@goslingczubak.com) | [www.goslingczubak.com](http://www.goslingczubak.com)

[Connect with us on LinkedIn!](#)

---

**From:** Wiest, Jeremy (MDOT) [mailto:WiestJ@michigan.gov]  
**Sent:** Monday, June 12, 2017 7:01 AM  
**To:** Kevin Krogulecki <kskrogulecki@goslingczubak.com>  
**Cc:** Klaus Heinert <kdheinert@goslingczubak.com>  
**Subject:** RE: North Bayside Park - Acme Twp. - US-31 Drive Opening Sketch

Kevin,

I have discussed your newest layout with Krista and we are accepting of it.

Please let us know if you have anything else.

Thanks!

Jeremy

---

*Jeremy R. Wiest, P.E.*

**Permit Engineer**  
Michigan Department of Transportation  
Traverse City Transportation Service Center  
2084 US-31 South, Suite B  
Traverse City, MI 49685

Phone: 231-941-1986

---

**From:** Kevin Krogulecki [<mailto:kskrogulecki@goslingczubak.com>]  
**Sent:** Thursday, June 8, 2017 1:30 PM  
**To:** Wiest, Jeremy (MDOT) <[WiestJ@michigan.gov](mailto:WiestJ@michigan.gov)>  
**Cc:** Klaus Heinert <[kdheinert@goslingczubak.com](mailto:kdheinert@goslingczubak.com)>  
**Subject:** RE: North Bayside Park - Acme Twp. - US-31 Drive Opening Sketch

Hi Jeremy,

Thanks for getting back to us on this and providing the comments below. We have made the suggested layout changes and attached is our latest layout that we would like to pursue.

Edge of metal radii have been standardized at 25'. This widened our opening a little, and given our constraints we would like to shift the opening slightly north. This would do a couple things:

- Help improve one-way/directed vehicular circulation within the parking lot area of our site. This driveway shift forces entering vehicles to immediately turn right once they have traveled past the driveway.
- Gets us further away from the power pole to the south, as well as a steeper slopes to the south which fall off of the existing asphalt parking lot
- Adhere to 25' Radii standards. Final location of the proposed grate inlet would be tucked far enough north that it will be out of the way of vehicle tire traffic when entering the site.

The only request would be to swap out the existing north end curb and gutter inlet with a flush gutter inlet. This may require a new man hole cover as well, but ideally we would like to just swap inlets using the same cover and preventing any disruption of existing road asphalt. As discussed, we plan to keep hand patching of the asphalt road to an absolute minimum, given there will even be a need.

Thank you very much Jeremy, please let us know you and Krista's thoughts on this approach.

--

Kevin S. Krogulecki | Landscape Architect  
**Gosling Czubak Engineering Sciences, Inc.**

231.946.9191 office | 231.933.5105 direct  
[kskrogulecki@goslingczubak.com](mailto:kskrogulecki@goslingczubak.com) | [www.goslingczubak.com](http://www.goslingczubak.com)

[Connect with us on LinkedIn!](#)

---

**From:** Wiest, Jeremy (MDOT) [<mailto:WiestJ@michigan.gov>]  
**Sent:** Monday, May 22, 2017 4:18 PM  
**To:** Kevin Krogulecki <[kskrogulecki@goslingczubak.com](mailto:kskrogulecki@goslingczubak.com)>  
**Subject:** RE: North Bayside Park - Acme Twp. - US-31 Drive Opening Sketch

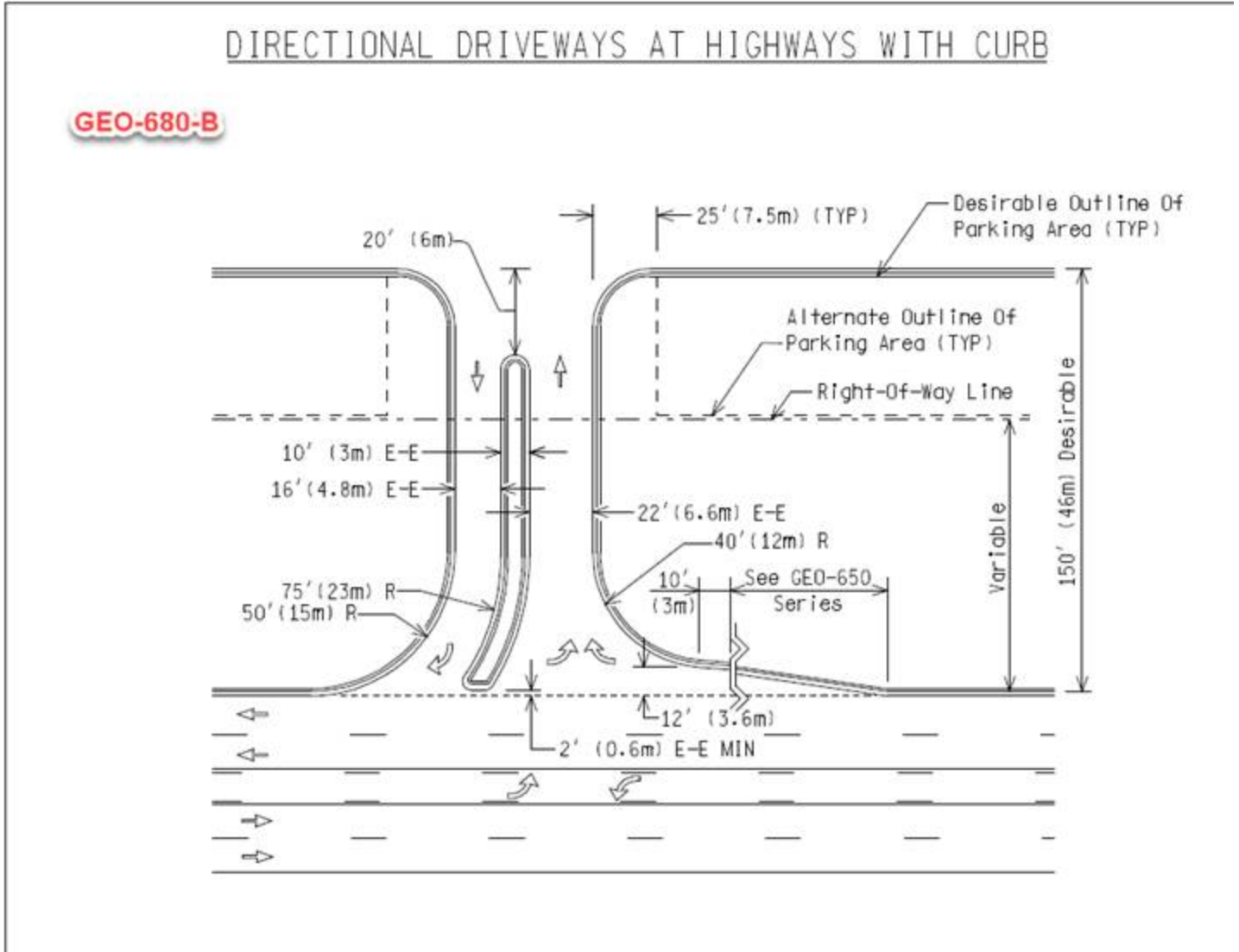
Kevin,

I have discussed this with Krista and have two minor comments.

- 1.) We know you are constrained by the power pole and the catch basin but we were wondering if there would be any way to get a little bigger radius on the north curb. A 20 foot radius is on the

small end and if you were able to increase it even 5 feet it would make it easier for a vehicles making the right into the driveway.

2.) The curb island needs to be set back 2 foot as shown in GEO-680-B, below.



Let us know if you have anything else.

Jeremy

*Jeremy R Wiest, P.E.*

**Permit Engineer**

Michigan Department of Transportation

Traverse City Transportation Service Center

2084 US-31 South, Suite B

Traverse City, MI 49685

Phone: 231-941-1986

---

**From:** Kevin Krogulecki [<mailto:kskrogulecki@goslingczubak.com>]  
**Sent:** Friday, May 19, 2017 9:34 AM  
**To:** Wiest, Jeremy (MDOT) <[WiestJ@michigan.gov](mailto:WiestJ@michigan.gov)>  
**Subject:** RE: North Bayside Park - Acme Twp. - US-31 Drive Opening Sketch

Great, thank you Jeremy!

--  
Kevin S. Krogulecki | Landscape Architect  
**Gosling Czubak Engineering Sciences, Inc.**

231.946.9191 office | 231.933.5105 direct  
[kskrogulecki@goslingczubak.com](mailto:kskrogulecki@goslingczubak.com) | [www.goslingczubak.com](http://www.goslingczubak.com)

[Connect with us on LinkedIn!](#)

---

**From:** Wiest, Jeremy (MDOT) [<mailto:WiestJ@michigan.gov>]  
**Sent:** Friday, May 19, 2017 9:29 AM  
**To:** Kevin Krogulecki <[kskrogulecki@goslingczubak.com](mailto:kskrogulecki@goslingczubak.com)>  
**Cc:** Klaus Heinert <[kdheinert@goslingczubak.com](mailto:kdheinert@goslingczubak.com)>  
**Subject:** RE: North Bayside Park - Acme Twp. - US-31 Drive Opening Sketch

Kevin,

I will discuss this with Krista next week when both of are back in the office.

Thanks!

Jeremy

---

*Jeremy R Wiest, P.E.*  
**Permit Engineer**  
*Michigan Department of Transportation  
Traverse City Transportation Service Center  
2084 US-31 South, Suite B  
Traverse City, MI 49685  
Phone: 231-941-1986*

---

**From:** Kevin Krogulecki [<mailto:kskrogulecki@goslingczubak.com>]  
**Sent:** Tuesday, May 16, 2017 6:01 PM  
**To:** Wiest, Jeremy (MDOT) <[WiestJ@michigan.gov](mailto:WiestJ@michigan.gov)>  
**Cc:** Klaus Heinert <[kdheinert@goslingczubak.com](mailto:kdheinert@goslingczubak.com)>  
**Subject:** North Bayside Park - Acme Twp. - US-31 Drive Opening Sketch

Hi Jeremy,

To follow up on our on-site meeting at Bayside Park:

We put together a quick sketch for a driveway opening to US-31 from the park. It introduces a directional driveway with center island limiting drivers to a right-turn-only out of the park in this location. As you can see we are working with pretty tight constraints due to the power pole to the south and existing catch basin to the north (we would like to keep the opening within these limits, basically giving us a width of 40'+/- max to work with).

Just wanted to get your thoughts before we get to far along. Would something like this be possible given allowed deviation from your standard details? Would you have any suggestions or other similar project examples that would apply to this scenario?

Please take a look and let me know what you think. Maybe after your review, we could have a quick phone call discussing what our options are here to keep the ball rolling. Thanks Jeremy, hope to hear from you soon.

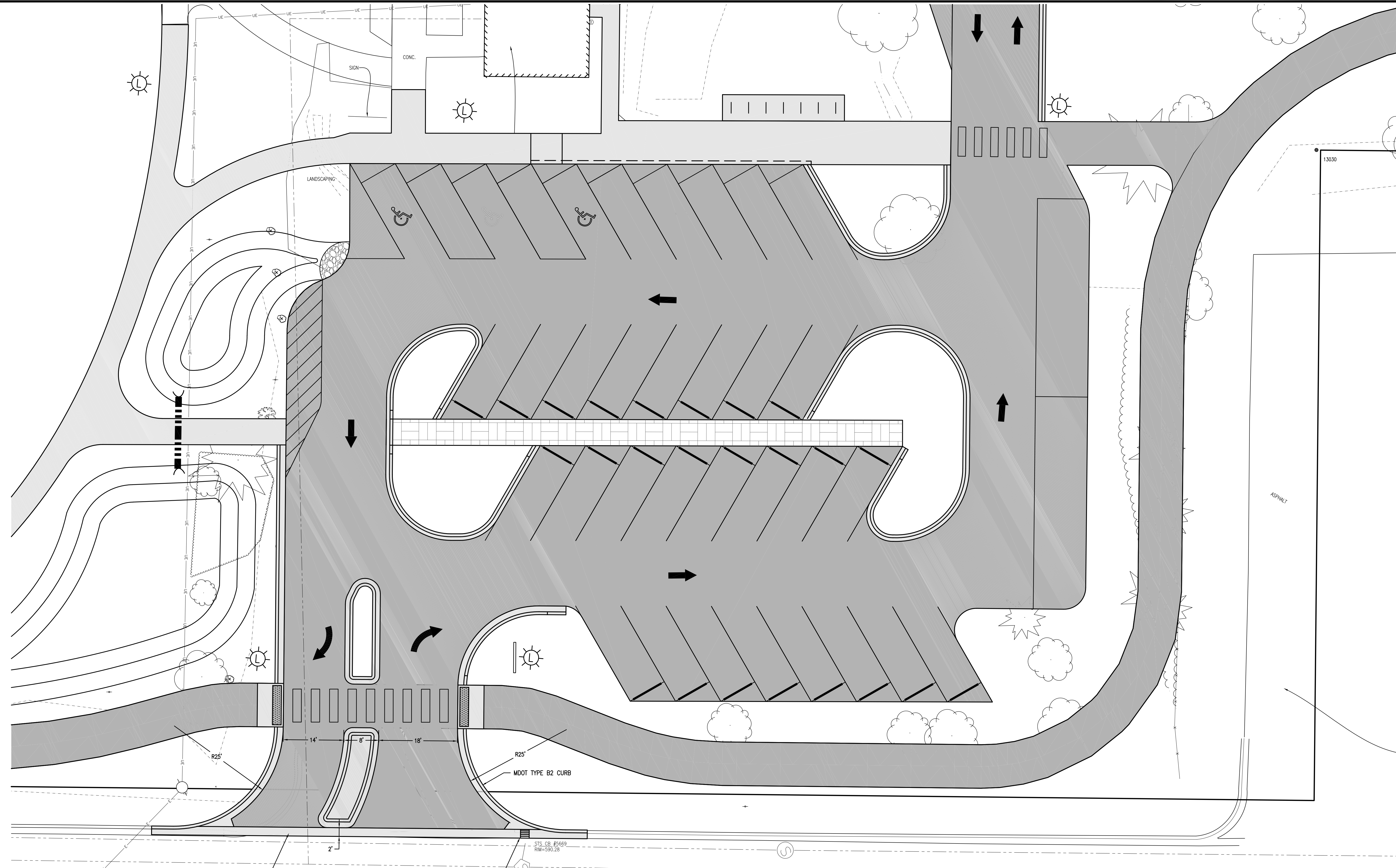
--

Kevin S. Krogulecki | Landscape Architect  
**Gosling Czubak Engineering Sciences, Inc.**

231.946.9191 office | 231.933.5105 direct  
[kskrogulecki@goslingczubak.com](mailto:kskrogulecki@goslingczubak.com) | [www.goslingczubak.com](http://www.goslingczubak.com)

[Connect with us on LinkedIn!](#)





2'-0" CONC. GUTTER, FLUSH

REMOVE EX. CURB AND GUTTER STORM INLET. REPLACE WITH FLUSH GUTTER INLET TO BE LOCATED IN-LINE WITH CONCRETE GUTTER SECTION OF DRIVEWAY APPROACH

R25'

MDOT TYPE B2 CURB

STS\_CB #5669  
RIM=590.28

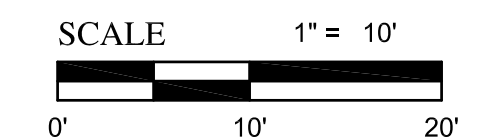
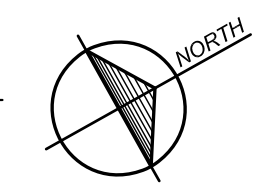
### NORTH BAYSIDE PARK - US-31 DRIVE OPENING

SCALE: 1" = 10'

#### BENCHMARK

BM#1 (BENCH MARK)  
SET SPIKE 12" WHITE PINE  
EL=587.00 (NAVD 88)

PART OF GOVERNMENT LOT 1  
SECTION 3, TOWN 27 NORTH, RANGE 10 WEST  
ACME TOWNSHIP, GRAND TRAVERSE CO., MI.



**Gosling Czubak**  
engineering sciences, inc.  
1200 Lakeshore Drive, Suite 200  
231-848-9391 800-988-1862  
Fax 231-848-9393

Engineers  
Surveyors  
Environmental Services  
Architecture

By:	Revision:
No.:	Date:
Drawn By:	Checked By:
Date:	Scale:
6/8/2017	AS NOTED

Location: 5387 US 31 N  
Williamsburg, MI 49630

**OVERALL LAYOUT**  
North Bayside Park  
Acme Township, Michigan

Project No. 2017390001.01  
Sheet **s1**



## Shawn Winter

---

**From:** Kevin Krogulecki <kskrogulecki@goslingczubak.com>  
**Sent:** Thursday, June 08, 2017 1:37 PM  
**To:** Shawn Winter; Jay Zollinger; Klaus Heinert  
**Subject:** RE: North Bayside Park Dumpster Enclosure Sketch

Ok thank you very much for the input Shawn. We will scope out some material options for this enclosure and run them past you as we move forward.

Thanks again!

--

Kevin S. Krogulecki | Landscape Architect  
**Gosling Czubak Engineering Sciences, Inc.**

231.946.9191 office | 231.933.5105 direct  
[kskrogulecki@goslingczubak.com](mailto:kskrogulecki@goslingczubak.com) | [www.goslingczubak.com](http://www.goslingczubak.com)

[Connect with us on LinkedIn!](#)

---

**From:** Shawn Winter [mailto:swinter@acmetownship.org]  
**Sent:** Thursday, June 08, 2017 8:51 AM  
**To:** Kevin Krogulecki <kskrogulecki@goslingczubak.com>; Jay Zollinger <JZollinger@acmetownship.org>; Klaus Heinert <kdheinert@goslingczubak.com>  
**Subject:** RE: North Bayside Park Dumpster Enclosure Sketch

Kevin,

I like the location. I think its practical, positioned in an unobstructive way, and context sensitive (I tried stringing together as many planning buzzwords I could there). I've include the section of the Ordinance that relates to refuse receptacles. Currently, it requires wood screening. We're rewriting our whole Ordinance and we're proposing that we remove the wood provisions since it tends to damage easily, and instead call for materials that match the building façade (not really applicable here), or of concrete block that is concealed with plantings. I support the use of concrete/durable materials if that is feasible.

d) Refuse receptacles and waste removal areas placed in the off-street parking area shall be screened from view on all sides. The screening shall consist of an opaque board fence constructed of cedar or pressure-treated lumber and shall exceed the height of the refuse receptacle in use by at least one foot, but shall in no event be less than six feet in height. Shrubs or vines shall be installed adjacent to this fence at an interval of one shrub or vine planted for each five lineal feet of fence.

### Shawn Winter

Planning & Zoning Administrator

Acme Township

6042 Acme Rd | Williamsburg, MI | 49690

Phone: 231.938.1350 Fax: 231.938.1510

[swinter@acmetownship.org](mailto:swinter@acmetownship.org)

---

**From:** Kevin Krogulecki [<mailto:kskrogulecki@goslingczubak.com>]

**Sent:** Wednesday, June 07, 2017 6:25 PM

**To:** Shawn Winter <[swinter@acmetownship.org](mailto:swinter@acmetownship.org)>; Jay Zollinger <[JZollinger@acmetownship.org](mailto:JZollinger@acmetownship.org)>; Klaus Heinert <[kdheinert@goslingczubak.com](mailto:kdheinert@goslingczubak.com)>

**Subject:** North Bayside Park Dumpster Enclosure Sketch

Hi Jay and Shawn,

Please see the attached sketch layout for the future dumpster enclosure for North Bayside Park. We would like to see the dumpster in this general location, and the size of the concrete pad is similar to what is found behind the McDonalds across the street, typically 8" thick reinforced. The trash truck shown on the sketch is to scale similar to a front loading Waste Management Truck.

Shawn, I could not find any reference to dumpster enclosure material (block, wood, vinyl, etc.) in the township's zoning ordinance. Is there a mandatory material for construction of these enclosures?? We would like to go with something natural, darker wood or darker vinyl, that will "disappear" as best as possible when tucked back in to the park area.

Please let us know your thoughts, this can obviously be tweaked and it gives us a good, scaled layout to work with.

Thank you!

--

Kevin S. Krogulecki | Landscape Architect

**Gosling Czubak Engineering Sciences, Inc.**

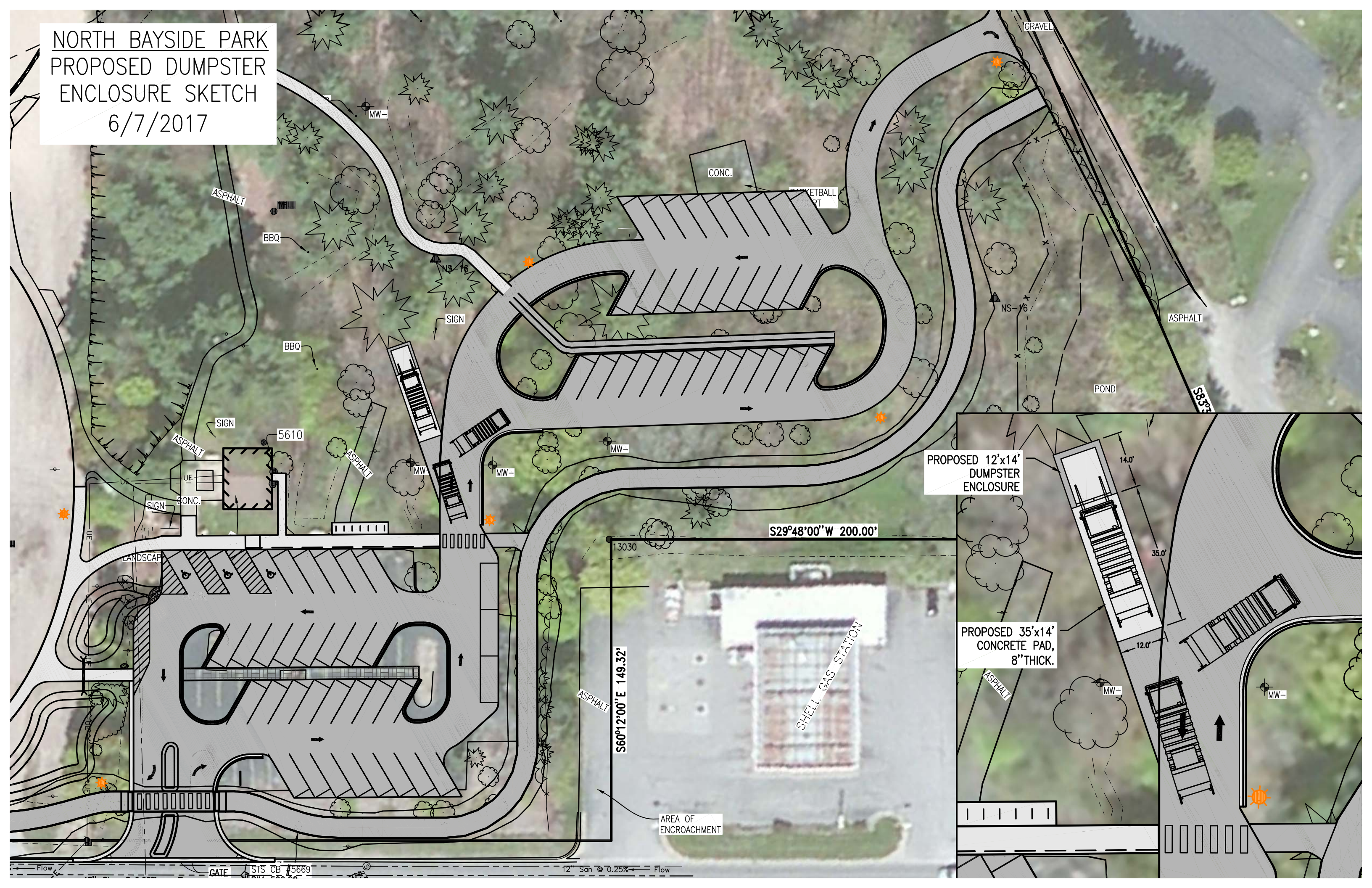
231.946.9191 office | 231.933.5105 direct

[kskrogulecki@goslingczubak.com](mailto:kskrogulecki@goslingczubak.com) | [www.goslingczubak.com](http://www.goslingczubak.com)

[Connect with us on LinkedIn!](#)



NORTH BAYSIDE PARK  
PROPOSED DUMPSTER  
ENCLOSURE SKETCH  
6/7/2017



PROPOSED 12'x14'  
DUMPSTER  
ENCLOSURE

PROPOSED 35'x14'  
CONCRETE PAD,  
8" THICK.

S29°48'00"W 200.00'

S60°12'00"E 149.32'

AREA OF  
ENCROACHMENT

GATE STS CB #5669

12" San @ 0.25%



## Shawn Winter

---

**From:** Klaus Heinert <kdheinert@goslingczubak.com>  
**Sent:** Monday, June 12, 2017 10:06 AM  
**To:** Shawn Winter  
**Subject:** FW: North Bayside Park, Acme Township - Landscape Forms # 238721  
**Attachments:** image001.gif; Q\_238721\_North Bayside Park, Acme Township.pdf; LS999-06096-BRK.PDF; LS999-06096-BRK grass.jpg; 238721 - LS999-06017-CDS-GRS-BRK.pdf; 238721 - LS602-02.pdf

**From:** Landscape Forms Mercury Team [mailto:mercury@landscapeforms.com]  
**Sent:** Friday, June 09, 2017 4:41 PM  
**To:** Klaus Heinert <kdheinert@goslingczubak.com>  
**Cc:** Toni Gasperoni <tonig@landscapeforms.com>  
**Subject:** North Bayside Park, Acme Township - Landscape Forms # 238721

Hello,

Thank you for the opportunity to quote our product!

**Our quotation is attached and reflects NET pricing.** Pricing is valid for 60 days.

**\*\* PLEASE NOTE: LANDSCAPE FORMS is a manufacturer/supplier only. Plans and specifications are not in our office. The purchaser is responsible for confirming that product, material, options and quantities conform to the project specifications.**

**Formal lead-time will be determined at the time of an order.**

- Subject to any required approvals.

**Freight is FOB Destination and has been quoted as dock-to-dock.**

- Shipping and handling charges are shown at the end of the quote.
- Unloading is the consignee's responsibility.
- Lift gate service (not an option for large items) is available for an additional fee.

**You may begin the order process by sending your purchase order\*:**

- Via fax to 269.337.1389
- Via email to [mercury@landscapeforms.com](mailto:mercury@landscapeforms.com)
- Via ground to 7800 E. Michigan Ave., Kalamazoo MI 49048.

*\*If you do not issue purchase orders and wish to sign our document, PLEASE contact us to provide the billing and shipping address information and we will revise our quotation; we cannot accept a signed generic bidders quote.*

Thanks again for your interest in Landscape Forms! Our quality products and superior service have earned us the loyalty and trust of customers worldwide. We appreciate the opportunity to quote our products and services to you.

Good luck with your project!

\*To better enhance our customer service experience, we have implemented some very exciting changes! Please note our title change to Customer Service Specialists, and new team name of Mercury. Thank you for your patience, and understanding while we update these changes to better serve our customers.

**We value your opinion. Please take a moment to share your experience.  
Click [here](#) for a brief survey.**

landscapeforms®

Monica Johnson  
Customer Service Specialist  
Landscape Forms Inc.  
Office: 800.441.1945 x1339  
Fax: 269.337.1389  
[mercury@landscapforms.com](mailto:mercury@landscapforms.com)  
[www.landscapeforms.com](http://www.landscapeforms.com)

# Quote

Date: 06/09/2017  
 LF Quote#: 0000238721  
 PO#:

Project: North Bayside Park, Acme Township

Bill To: Bidders Quote  
 ATTN: Accounts Payable

**CORPORATE**  
 7800 E. Michigan Avenue  
 Kalamazoo, MI 49048-9543  
 P: 800.521.2546 F: 269.381.3455  
 www.landscapeforms.com  
 Federal I.D.# 38-1897577

Ship To: Bidders Quote  
 ATTN: Please Advise  
 Williamsburg, MI 49690

Ship Via: Common Carrier  
 F.O.B.: Destination

Qty	Description	Unit Price	Total Price
-----	-------------	------------	-------------

Tagging Instructions:  
 Bill of Lading Instructions:

**When ordering please confirm:**

- Shipping address and contact information (name and ph#)
- Billing address and contact information
- Is your firm or the project tax exempt? If so, exemption certificate must accompany order
- Delivery schedule:

Immediately upon completion

Target delivery date: \_\_\_\_\_

4	LS999-06096-BRK: Lakeside 67" long backless bench with end and center arms. Bark polysite slats. Freestanding/Surface mount. 2"x10" bronze etched plaque installed on right arm (as seated), holes to accept plaque on left arm. Powdercoat color: Grass	\$ 2,580.00	\$ 10,320.00
5	LS999-06017-CDS-GRS-BRK: Lakeside 67" long backed bench. Back panel: Grass. Seat panel: Polysite picket fence - color: bark. Freestanding/surface-mount. Powdercoat color:	\$ 2,130.00	\$ 10,650.00
5	The etched plaque is \$175 and holes drilled in the arm to accept plaque are \$50	\$ 225.00	\$ 1,125.00
5	Holes in arm to accept future plaque. \$50	\$ 50.00	\$ 250.00
5	Lakeside Litter Style: <i>Side Opening</i> Options: <i>None</i> Material: <i>Grass Panel Design</i> Powdercoat Color: <i>Grass</i> Standard Features: <i>Black Polyethylene Liner</i>	\$ 1,215.00	\$ 6,075.00
2	Lakeside Litter Style: <i>Side Opening</i> Options: <i>None</i> Material: <i>Custom Panel Design</i> Powdercoat Color: <i>To Be Advised</i> Standard Features: <i>Black Polyethylene Liner</i>	\$ 1,345.00	\$ 2,690.00

**Ship Date:**

Cust #: 00RYW  
 SSR: Monica Johnson  
 Rep: Toni Gasperoni MI5

*Landscape Forms Sales Service*

Purchaser

Seller

# Quote

Date: 06/09/2017  
 LF Quote#: 0000238721  
 PO#:

Project: North Bayside Park, Acme Township

Bill To: Bidders Quote  
 ATTN: Accounts Payable

**CORPORATE**  
 7800 E. Michigan Avenue  
 Kalamazoo, MI 49048-9543  
 P: 800.521.2546 F: 269.381.3455  
 www.landscapeforms.com  
 Federal I.D.# 38-1897577

Ship To: Bidders Quote  
 ATTN: Please Advise  
 Williamsburg, MI 49690

Ship Via: Common Carrier  
 F.O.B.: Destination

Qty	Description	Unit Price	Total Price
2	RECYCLE SIGNAGE: Litter style: Lakeside side or top opening: Grass design. Single stream unit. TWO same design 5" x 7" vinyl signs. White vinyl with black lettering from standard offering.	\$ 195.00	\$ 390.00
13	Ride Bike Rack Mounting: <i>To Be Advised</i> Powdercoat Color: <i>To Be Advised</i>	\$ 440.00	\$ 5,720.00
Item Total			\$ 37,220.00
Shipping & Handling			\$ 1,870.00
Sub Total			\$ 39,090.00
Estimated Tax			\$ 2,345.40
Document Total			\$ 41,435.40

Payment Terms: NET 30 - PENDING CRED APPROVAL

Landscape Forms, Inc. reserves the right to change payment terms based on payment history as well as information obtained from commercial credit reporting agencies.

- Purchaser is responsible for confirming options, materials, quantities, etc., for completeness and conformity to plans and specifications.
- Changes to or cancellations of orders may incur a penalty charge of 30% or more. Special orders may not be changed or cancelled.
- Studio 431 (custom) orders cannot be cancelled once purchase order is received and approved.
- Studio 431 orders are subject to price increase after engineering/product development is complete and approved by designer, end user and purchaser. Modifications in price will be handled via Change Order.
- No merchandise can be returned without authorization from Landscape Forms. Returns may be subject to a disposition fee of 30-100%.
- Prices based on quantities shown and quantity changes may affect price.
- QUOTED prices are held for 60 days. After receipt of a written ORDER, prices will be held for up to one year from receipt of the order. Changes in quantity or specification may affect pricing.
- Pricing includes selection from our standard color palette. Optional colors and custom color matches are available for an additional fee and will extend lead-time. Please contact our corporate office for more information.
- Fixtures for custom products are the property of Landscape Forms, Inc., and are not available for sale.
- Landscape Forms is a supplier only and ships via common carrier. Customer is responsible for offloading and installing unless otherwise indicated above.

**Ship Date:**

Cust #: 00RYW  
 SSR: Monica Johnson  
 Rep: Toni Gasperoni MI5

*Landscape Forms Sales Service*

Purchaser

Seller



# Quote

Date: 06/09/2017  
LF Quote#: 0000238721  
PO#:

Project: North Bayside Park, Acme Township

Bill To: Bidders Quote  
ATTN: Accounts Payable

**CORPORATE**  
7800 E. Michigan Avenue  
Kalamazoo, MI 49048-9543  
P: 800.521.2546 F: 269.381.3455  
www.landscapeforms.com  
Federal I.D.# 38-1897577

Ship To: Bidders Quote  
ATTN: Please Advise  
Williamsburg, MI 49690

Ship Via: Common Carrier  
F.O.B.: Destination

- 
- Mounting hardware is only available on a limited number of products. Please consult the installation recommendations or contact our corporate office to confirm. In the event hardware is provided, it MUST be used for proper installation.
  - Refer to Care and Maintenance guidelines for more detailed information and instructions.
  - All orders ship upon completion of fabrication. A one-week grace period may be available, after which storage fees will apply.
  - This Agreement contains the entire understanding between the parties. All prior communications are merged into this Agreement. The terms of this Agreement shall control any conflict between documents.
  - This Agreement may be signed by the parties separately and by facsimile, and together they shall be deemed one binding, original Agreement.
  - Purchaser shall pay all costs and expenses paid or incurred by Landscape Forms, Inc. in collecting any amounts due for goods purchased by Purchaser, including without limitation, reasonable attorneys' fees and collection costs. Balances on invoices not paid within 30 days of date of invoice, or within an alternate period of time as determined and indicated by Landscape Forms, shall incur interest at a rate of 18% per annum. Cash discounts are not offered.
  - Tax is estimated. Actual tax will be charged on final invoice and shall be payable by the Purchaser. U.S. customers must provide a valid sales tax exemption or resale certificate to remove liability.
  - To the extent purchaser supplies or modifies the standard specifications for any products, Landscape Forms, Inc. expressly disclaims all representations and warranties related to such products or their design whether express or implied except that the products shall be manufactured in accordance with purchaser's specifications.
  - **REMITTANCE OPTIONS:** For information on paying via credit card, ACH, direct bank transfer, or wire please email us at [AR@landscapeforms.com](mailto:AR@landscapeforms.com). Mail payments to:

**USD Checks**  
Landscape Forms, Inc.  
Dept 78073  
PO Box 78000  
Detroit, MI 48278-0073  
USA

**CAD Cheques**  
Landscape Forms, Inc.  
PO Box 2408  
Station A  
Toronto, Ontario M5W 2K6  
CAN

---

**Ship Date:**

Cust #: 00RYW  
SSR: Monica Johnson  
Rep: Toni Gasperoni MI5

*Landscape Forms Sales Service*

---

Purchaser

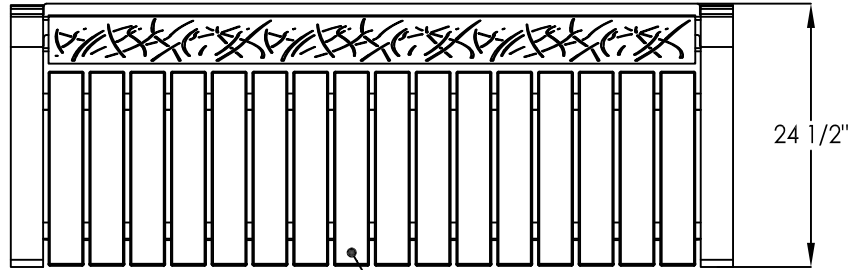
Seller



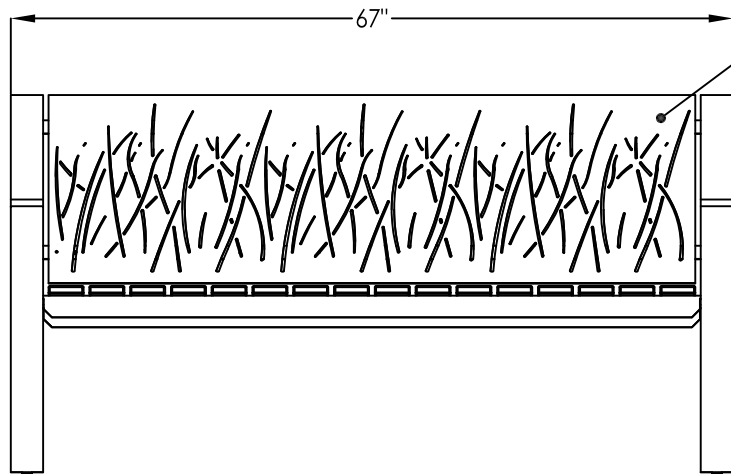
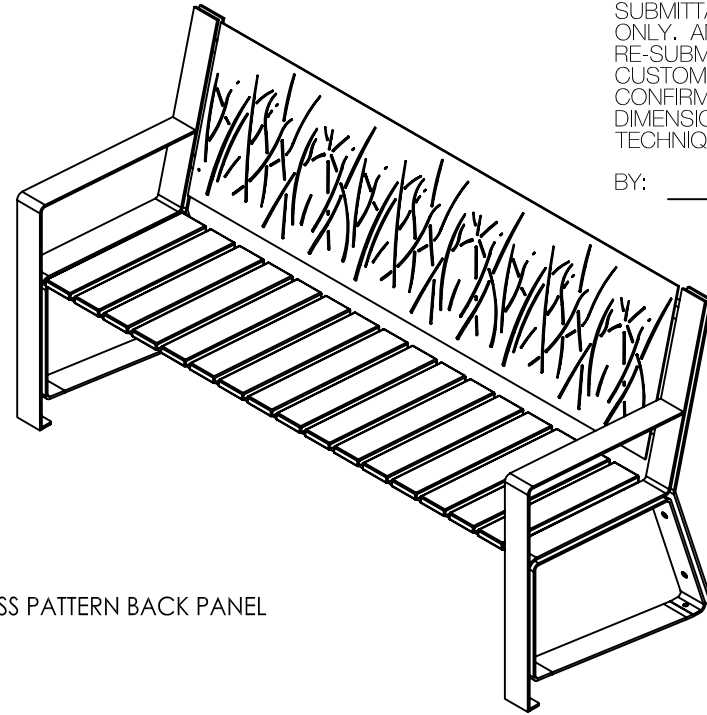
- \_\_\_\_ APPROVED
- \_\_\_\_ REVISE AND RESUBMIT
- \_\_\_\_ REJECTED

COMMENTS MADE ON THESE SUBMITTALS ARE FOR INFORMATION ONLY. ANY CHANGES REQUIRE RE-SUBMITTAL AND APPROVAL. CUSTOMER IS RESPONSIBLE FOR CONFIRMING ALL QUANTITIES, DIMENSIONS, AND INSTALLATION TECHNIQUES.

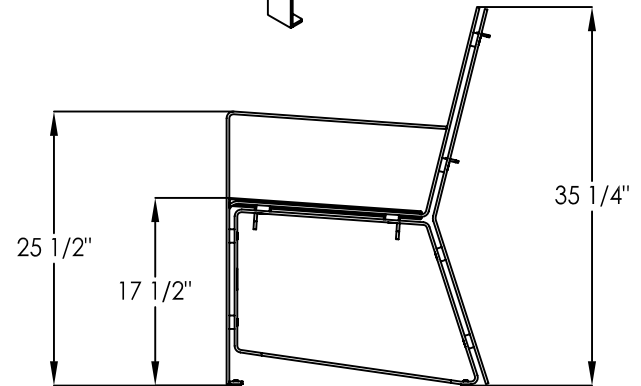
BY: \_\_\_\_\_ DATE: \_\_\_\_\_



POLYSITE SLATS  
COLOR: BARK



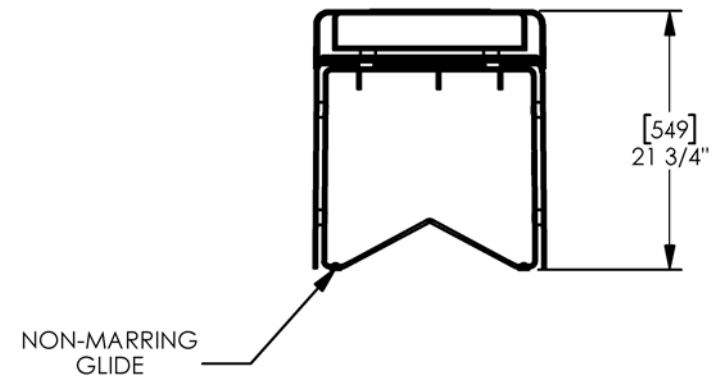
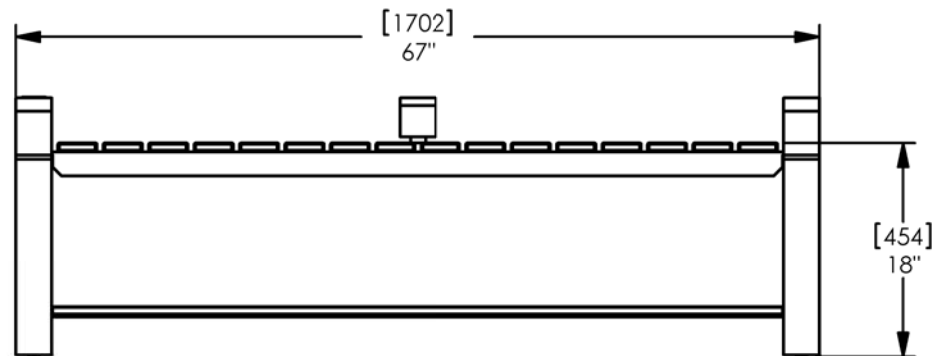
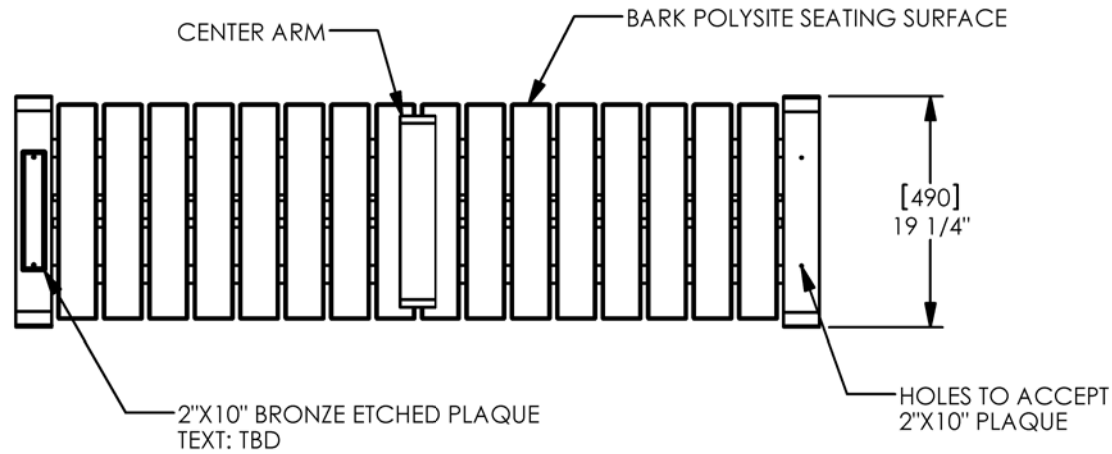
GRASS PATTERN BACK PANEL



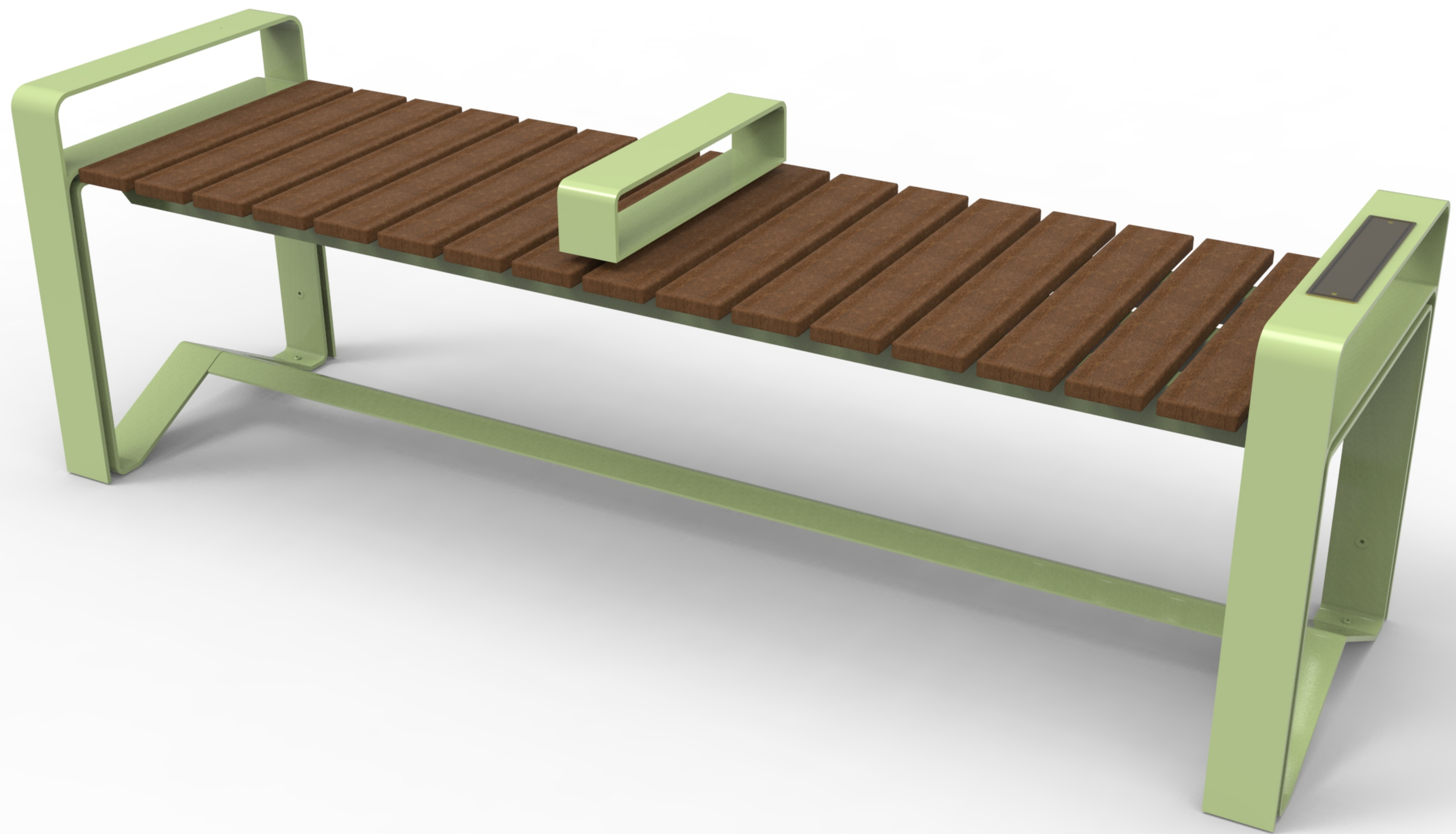
\_\_\_\_ APPROVED  
\_\_\_\_ REVISE AND RESUBMIT  
\_\_\_\_ REJECTED

COMMENTS MADE ON THESE SUBMITTALS ARE FOR INFORMATION ONLY. ANY CHANGES REQUIRE RE-SUBMITTAL AND APPROVAL. CUSTOMER IS RESPONSIBLE FOR CONFIRMING ALL QUANTITIES, DIMENSIONS, AND INSTALLATION TECHNIQUES.

BY: \_\_\_\_\_ DATE: \_\_\_\_\_









# commemorative plaques

technical information

May 2010

Landscape Forms supplies commemorative plaques for many bench styles. This technical information sheet serves as a thought starter. Contact your Landscape Forms sales representative for selection assistance and pricing.

Steps to specifying a bench with commemorative plaque:

1. Choose bench style first
2. Determine verbiage for plaque
3. Determine which plaque style (machined or etched) best accommodates the verbiage

Considerations when specifying a bench with commemorative plaque:

## 1. Preferred bench style: wood or metal

### WOOD:

Plaque may be surface-mounted or recessed. Note: The machined plaque is 5/16" thick and will protrude from the surface more than the 1/16" thick etched plaque.

### METAL:

Most styles do not allow the plaque to be recessed. In this case, the thinner etched plaque is more suitable.

## 2. Preferred plaque style

### MACHINED:

Style: Traditional with raised lettering on bronze

Material: Bronze

Size: 2" h x 10" w x 5/16" d

Fonts: Times New Roman (consult with your sales representative if other fonts are desired)

Verbiage: Number of characters and lines limited due to machining process

Mounting: Recessed for wood benches or Scarborough strap bench. Surface-mounted for all other bench styles

Typical Bench Styles: Scarborough strap bench (recessed or surface mounted plaque), Plainwell wood bench (recessed or surface mounted plaque), Plainwell aluminum bench (surface mounted plaque only)

## 2. Preferred plaque style (continued)

### ETCHED:

Style: Transitional or contemporary look with letters etched into bronze or stainless steel.

Material: Stainless Steel or Bronze

Size: 2" h x 10" w x 1/16" d

Fonts: Times New Roman (consult with your sales representative if other fonts are desired)

Verbiage: Etching process allows for more characters and lines

Mounting: Surface Mounted

Typical bench styles: Plainwell (wood or aluminum), Towne Square, Sit, Stay, Wellspring

**Note: Custom sized plaques are available, style of bench determines dimensions.**



*machined bronze*



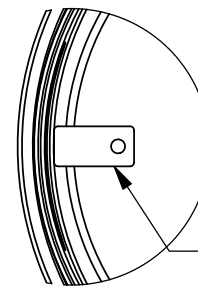
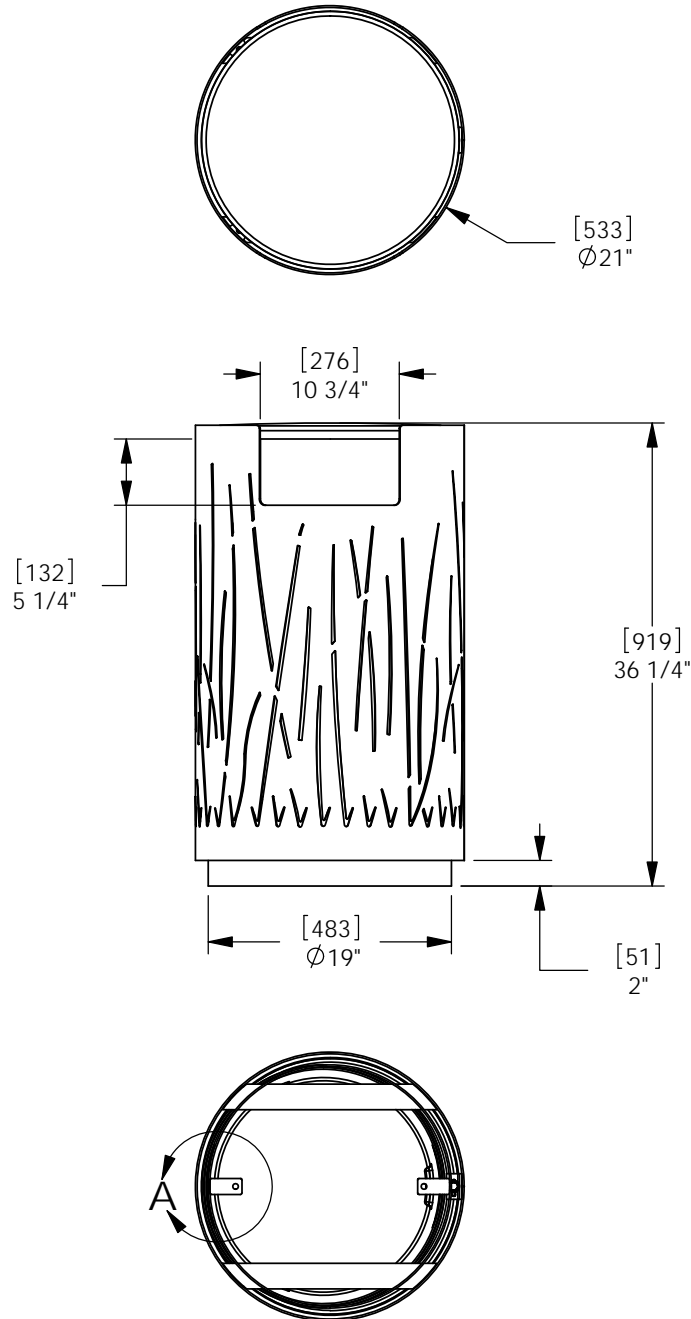
*etched stainless steel*



*etched bronze*



*Scarborough bench with recessed plaque.*



DETAIL A  
SCALE 1 : 6

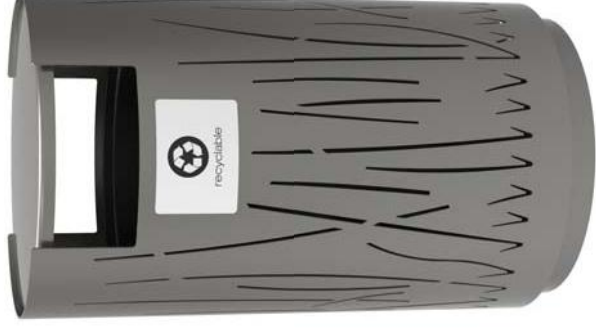
FREESTANDING OR SURFACE MOUNT OPTONS  
7/16"[11] DIA. MOUNTING HOLES  
HARDWARE SUPPLIED BY OTHERS

## Lakeside litter-Special recycling

- **(Plain)** Standard option(s):
    - Side open unit
    - With or without ash pan
  - Special Pricing (upcharge).....\$70.00
  - Special option(s) include:
    - (2) standard signs (same)
    - Alternate color for lid (add in comments)
- 



- **(Grass)** Standard option(s):
  - Side open unit
  - With or without ash pan
- Special Pricing (upcharge).....\$200.00
- Special option(s) include:
  - (2) standard signs (same)
  - Alternate color for lid (add in comments)



- **Contact product support with any questions.**
- **Contact sales support for quotes.**



## 2017 Net Price List

All prices are net, FOB destination, with shipping and handling added to the invoice. Prices do not include shipping and handling, sales tax, GST, duties, or brokerage fees. Each product may have additional information that could affect pricing. Please see online pricing for additional information. For Canadian shipments GST will be added to the invoice. Prices subject to change without notice. For definitive pricing, please contact Sales Support for a formal quote.

## Bicilinea Bike Rack

To order: Specify model description. 10 ft. Bicilinea can accommodate eight bikes; 20 ft. holds up to 16 bikes. Some assembly required. Bicilinea meets APBP guidelines.

### Bicilinea Bike Rack

	Size (d x h x l)	Ship Weight	Price (USD)
Bike Rack, 10ft.	60.0" x 32.0" x 119.0"	155 lbs.	\$3890
Bike Rack, 20 ft.	60.0" x 32.0" x 238.0"	290 lbs.	\$6900



bike rack | 10 ft

bike rack | 20 ft

## Bola Bike Rack

To order: Specify model description, powdercoat color, or electro polished stainless steel. Ships fully assembled. Bola can secure two bicycles parked parallel to rack. Bola meets guidelines established by the APBP.

### Bola Bike Rack

	Size (d x w x h)	Ship Weight	Price (USD)
Stainless Steel	1.5" x 27.5" x 32.0"	21 lbs.	\$330
Powdercoat Steel	1.5" x 27.5" x 32.0"	21 lbs.	\$260



bike rack

## Emerson Bike Rack

Emerson bike rack design is protected by U.S. Patent No. D648,658. To order: Specify collection, model description and powdercoat color. Select surface mount or embedded. Cover plate conceals anchoring hardware and leveling glide adjustment screws. Hardware ships with embedded bike rack. Emerson ships fully assembled, and must be spaced 30" apart, and 24" from wall to meet APBP guidelines.

### Emerson Bike Rack

	Size (d x h x l)	Ship Weight	Price (USD)
Bike Rack	4.0" x 30.0" x 20.0"	50 lbs.	\$375

## FGP Bike Rack

To order: Specify collection name and product name. Specify surface mount or embedded. FGP bike rack is available fully assembled and is anodized. The body is natural aluminum

with a durable anodized finish. The cover plate has a durable dark grey finish.

#### FGP Bike Rack

	Size (d x h x l)	Ship Weight	Price (USD)
Bike Rack	4.0" x 32.0" x 30.0"	25 lbs.	\$360



bike rack

## Flo Bike Rack

Flo Bike Rack design is protected by U.S. Patent No. D529,433. To order: Specify model description, powdercoat color, or electro polished stainless steel. Specify surface mount or embedded. Ships fully assembled. Flo can secure three bicycles parked parallel to rack.

#### Flo Bike Rack Stainless Steel

	Size (d x w x h)	Ship Weight	Price (USD)
Surface Mount	28.0" x 26.0" x 32.0"	80 lbs.	\$745
Embedded	28.0" x 25.5" x 32.0"	81 lbs.	\$745

#### Flo Bike Rack Powdercoat Steel

	Size (d x w x h)	Ship Weight	Price (USD)
Surface Mount	28.0" x 26.0" x 32.0"	80 lbs.	\$660
Embedded Steel	28.0" x 25.5" x 32.0"	81 lbs.	\$660



surface mount detail

## Key Bike Rack

Key Bike Rack design is protected by European Community Design RCD 000500947. To order: Specify collection and product name. Specify Grey, Yellow or Red; base comes standard in silver powdercoat. Key must be embedded and ships fully assembled. Key can secure two bicycles to rack. Key meets APBP guidelines.

#### Key Bike Rack

	Size (d x h x l)	Ship Weight	Price (USD)
Bike Rack	3.0" x 23.0" x 32.0"	25 lbs.	\$520

## Loop Bike Rack

To order: Specify powdercoat. Loop must be embedded and ships fully assembled. Loop can secure two bicycles parked parallel to rack.

#### Loop Bike Rack

	Size (d x w x h)	Ship Weight	Price (USD)
Bike Rack	14.0" x 36.0" x 31.0"	25 lbs.	\$345



bike rack



## MultipliCITY Bike Rack

MultipliCITY Bike Rack design is protected by U.S. Patent No. D710, 783. To order: MultipliCITY bike rack is available fully assembled or in flat pack shipping and local assembly for domestic and international markets, contact Landscape Forms for details.

### MultipliCITY Bike Rack

	Size (d x h x l)	Ship Weight	Price (USD)
Bike Rack - Powdercoat	6.0" x 36.0" x 24.0"	75 lbs.	\$470
Bike Rack - Anodized	6.0" x 36.0" x 24.0"	75 lbs.	\$385

## Reeder Non-Illuminated Bike Rack

Reeder Bike Rack design is patent pending. To order: Select collection, model description and powdercoat color. The Reeder Illuminated Bike Rack ships fully assembled, and must be spaced 30" apart and 24" from wall to meet APBP guidelines. Specify color temperature for the bike rack. Specify with or without a bicycle sign/symbol or NOT, pricing is not affected but it is an option that needs to be specified.

### Non-Illuminated Bike Rack

	Size (d x h x l)	Ship Weight	Price (USD)
Bike Rack	3.0" x 38.0" x 8.0"	22 lbs.	\$410

## Ride Bike Rack

Ride bike rack design is protected by U.S. Patent No. D613,646. To order: Specify collection, model description and powdercoat color. Select surface mount or embedded. Ride ships fully assembled, and must be spaced 30" apart, and 24" from wall to meet APBP guidelines. Ride can secure two bicycles to rack.

### Ride Bike Rack

	Size (d x h x l)	Ship Weight	Price (USD)
Bike Rack	4.0" x 26.0" x 28.0"	50 lbs.	\$440

## Ring Bike Rack

To order: Specify model description, powdercoat color, or electro polished stainless steel. Ships fully assembled. Ring can secure two bicycles parked parallel to rack. Ring Bike Rack meets APBP guidelines.

### Ring Bike Rack

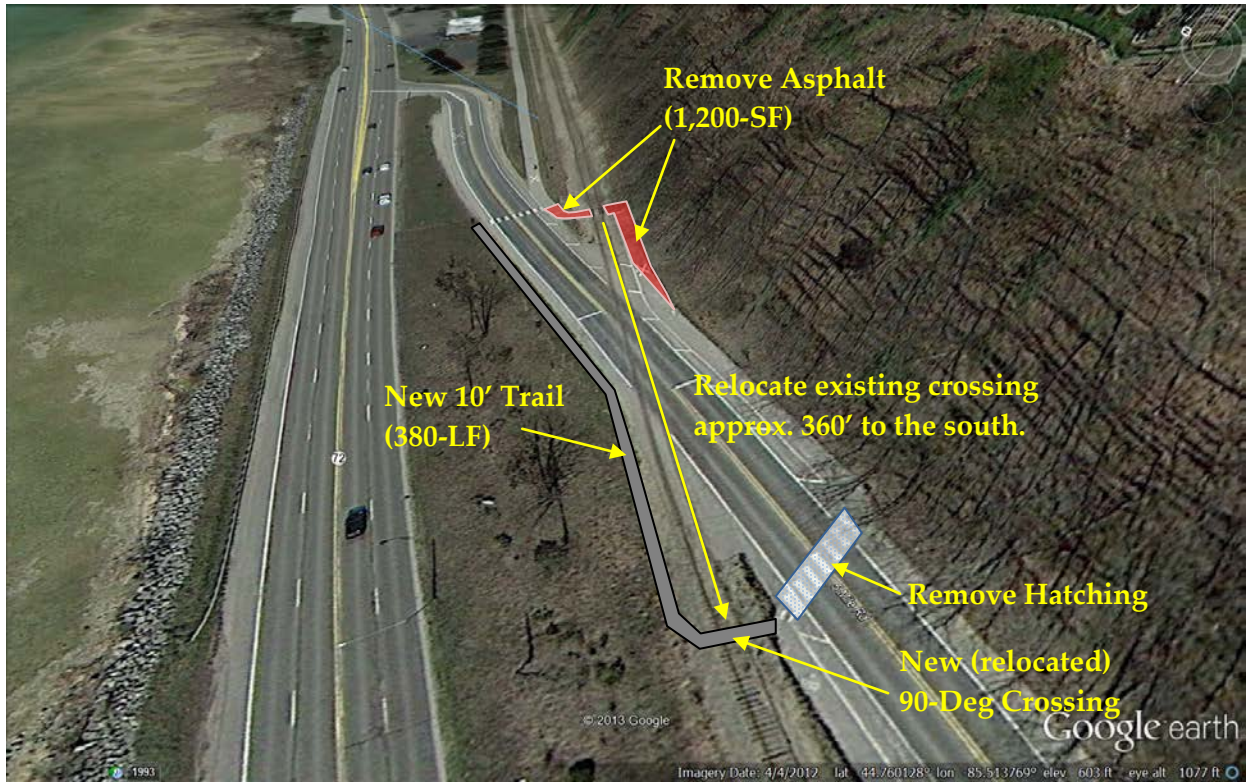
	Size (d x w x h)	Ship Weight	Price (USD)
Stainless Steel	1.5" x 25.0" x 27.0"	22 lbs.	\$405
Powdercoat Steel	1.5" x 25.0" x 27.0"	22 lbs.	\$320

TART Trails  
5-Mile Road Re-alignment  
Preliminary Cost Estimate  
October 4, 2013

Item No.	Item Description	Est. Quantity	Unit	Unit Price	Unit Cost
1	Mobilization	1	LS	\$6,000	\$6,000
2	Asphalt Removal	150	SYD	\$6	\$900
3	Pavement Marking Removal	130	SF	\$3	\$390
4	8" Agg. Base (MDOT 22A)	510	SYD	\$8	\$4,080
5	Soil Erosion Permit	1	LS	\$113	\$113
6	13A HMA (220#/SYD)	50	Tons	\$95	\$4,750
7	Silt Fence	400	LF	\$2	\$800
8	Earthwork (Grading /Shaping)	600	SYD	\$4	\$2,400
9	Restoration (Turfig, Seed & Mulch)	180	SYD	\$8.00	\$1,440
10	New RR Crossing	1	LS	\$8,000	\$8,000
<b>Subtotal</b>					<b>\$28,873</b>
<b>15% Conting.</b>					<b>\$4,331</b>
<b>Construction Total</b>					<b>\$33,204</b>
<b>12% Engineering</b>					<b>\$3,984</b>
<b>Total Project Estimate</b>					<b>\$37,188.42</b>

**NOTES:**

1. These costs are based on preliminary information. The actual site conditions may result in variations of unit prices or items.
2. Costs for financing, land right-of-way, easement acquisition not included in this cost estimate.
3. We are assuming that no utility relocations will be necessary for this project, thus utilities such as; gas, telephone, electric, and cable TV work is not included in this cost estimate.
4. This cost estimate is approximate. Actual construction bids may vary significantly from this statement of probable costs due to timing of construction (weather), changed conditions, labor rate, changes, or other factors beyond the control of the engineer.
5. These costs assumes that ther are no environmental issues impacting the proposed work area.
6. Discussions with MDOT and Great Lakes Central Railroad (GLC) indiated that existing crossing could be reused and that minimal flagging would be required during construction.

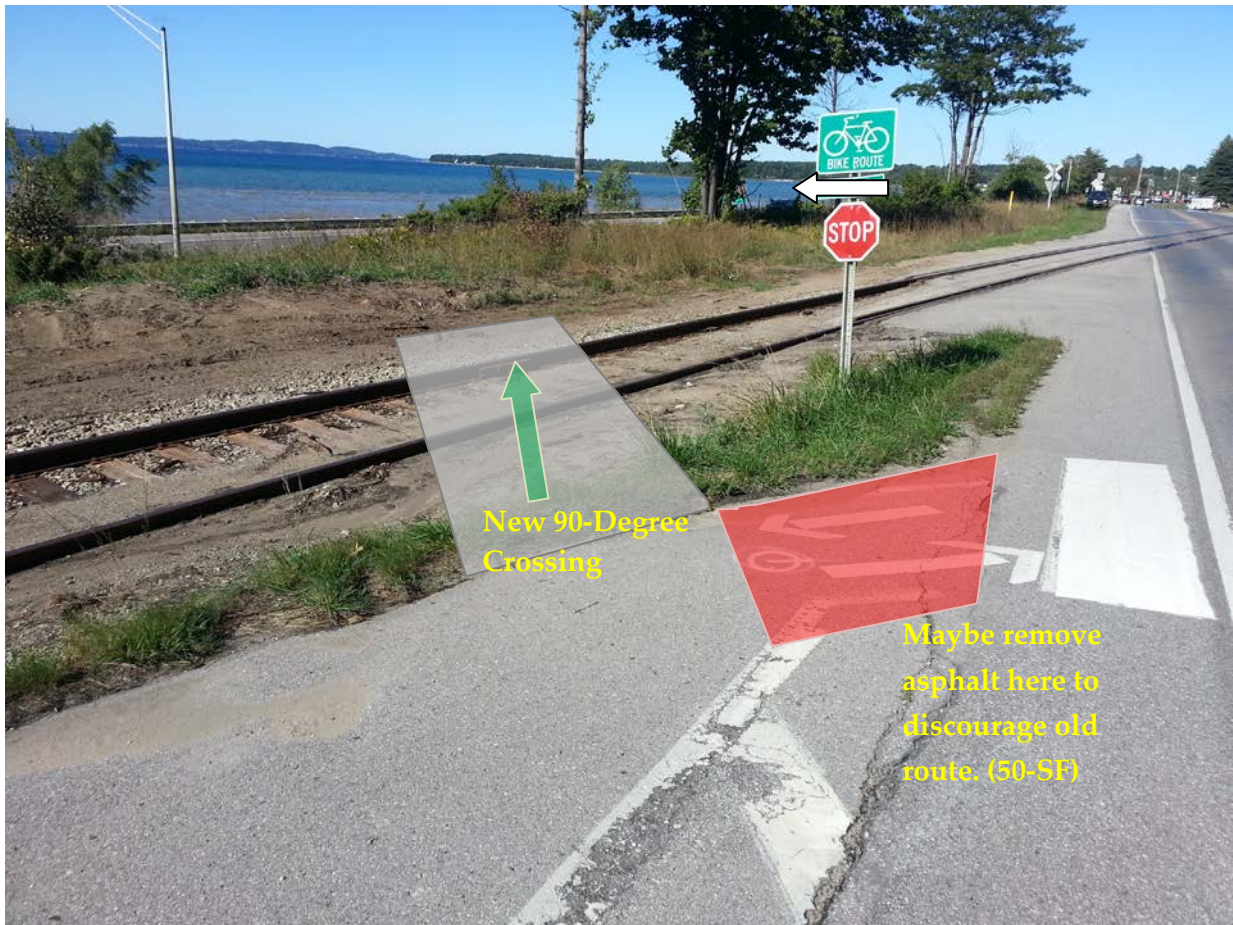






Remove Asphalt





**ACME TOWNSHIP  
PS #1 FORCEMAIN  
RE-ROUTING SCHEDULE**

**Early Schedule**

<u>Description</u>	<u>Duration</u> <u>Days</u>	<u>Start Date</u>	<u>End Date</u>
MDEQ Part 41 Permit	30	05/18/17	06/17/17
Soil Erosion Permit	14	06/01/17	06/15/17
Road Commission Permit	14	06/01/17	06/15/17
MDOT Lease Agreement	14	06/01/17	06/15/17
Project Bidding	30	06/17/17	07/17/17
Board Meeting	1	08/01/17	08/02/17
Bid Award	15	08/02/17	08/17/17
Construction	60	09/06/17	11/05/17

**Late Schedule**

<u>Description</u>	<u>Duration</u> <u>Days</u>	<u>Start Date</u>	<u>End Date</u>
MDEQ Part 41 Permit	60	05/18/17	07/17/17
Soil Erosion Permit	14	06/17/17	07/01/17
Road Commission Permit	14	06/17/17	07/01/17
MDOT Lease Agreement	14	06/17/17	07/01/17
Project Bidding	30	07/17/17	08/16/17
Board Meeting	1	09/05/17	09/06/17
Bid Award	15	09/06/17	09/21/17
Construction	45	09/21/17	11/05/17
Winter Shutdown	170	11/05/17	04/24/18
Construction	15	04/24/18	05/09/18

**Estimate on Construction Time**

<u>Work Item</u>		<u>Work Days</u>	<u>Calendar</u> <u>Days</u>
Force Main 1.4 Miles	7392	25	34
Road Crossings	2	2	3
Connections	2	2	3
Testing	4	4	6
Restoration		10	14

Total Construction Time = 60

